



WARRANTY & RATING



SPECIFICATIONS

- Wattage: 3.5W
- Voltage: AC120V
- Luminous Flux: 110lm
- Beam Angle: 30°
- Color Rendering Index (CRI): 90
- Lifespan: 30,000 hours
- Light Source: LED
- Color Temperature (CCT): 3000K
- Waterproof Rating: IP65
- Operating Temperature: -4°F - 104°F
- Material: Aluminum & iron

PRODUCT DESCRIPTION

Discover LEONLITE's 120V LED Step Lights, featuring a hidden light source to prevent glare, and a smooth 5%-100% dimmable range. Suitable for both indoor and outdoor settings. The high CRI90 enhances visual comfort, making them ideal for staircases and walls.

FEATURES & BENEFITS

- Anti-Glare Design: Hidden light source minimizes discomfort and eye strain.
- Adjustable Brightness: Dimmable from 5% to 100%, tailoring light to your needs.
- Waterproof and Durable: IP65 rated, ideal for both indoor and outdoor settings.
- Simple Integration: Easily replaces old lights, compatible with standard junction boxes.
- True Color Rendering: High CRI90+ for vibrant, natural-looking colors.

POWER AND ELECTRICAL FEATURES

- ETL Certified Product: Ensures safety and reliability, operating at AC120V and 60Hz with a current of 35mA, suitable for standard gang junction boxes.
- UL Listed Wiring and Plugs: Features brass wiring and P3 terminal connectors for secure electrical connections.

DESIGN AND STRUCTURE

- Material and Finish: Aluminum faceplate with iron clasp, available in Oil Rubbed Bronze and White models.
- Anti-Glare Design: Concealed light source to minimize glare.
- Comes with a waterproof gasket, but caulking is suggested for enhanced waterproofing outdoors.

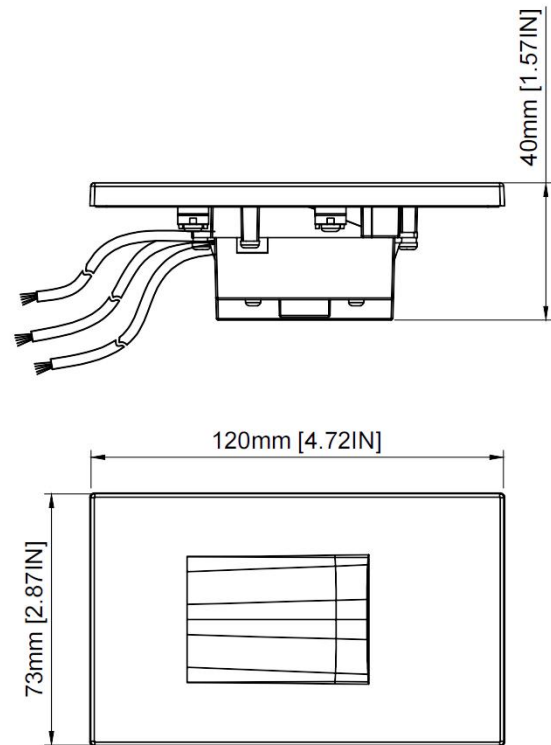
ADDITIONAL COMPONENTS

- Iron Bracket: Includes 1 bracket, size approximately 4.13 × 2.34 × 0.06 inches.
- Screws: Comes with 2 screws, each 8#-32 size and 0.87 inches long.
- Wire Caps: Provides 3 wire caps, each about 0.49 inches in diameter and 0.86 inches long.

LED AND OPTICAL PERFORMANCE

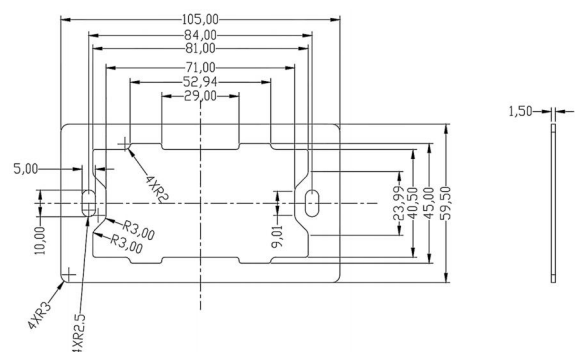
- PCB Dimensions: The board is 0.53 inches wide and 1.61 inches thick.
- Dimmable Compatibility: Supports 5%-100% dimming range, compatible with several dimmer models including Lutron DV-600P, PD-6WCL, MACL-153M, 603P, and Leviton DSL06, RNL06.
- LED Specs: Utilizes 7 SMD LEDs, each with a luminous efficacy of 110 lm/w, a CRI of 90, operating at 35mA.

PRODUCT DIAGRAM



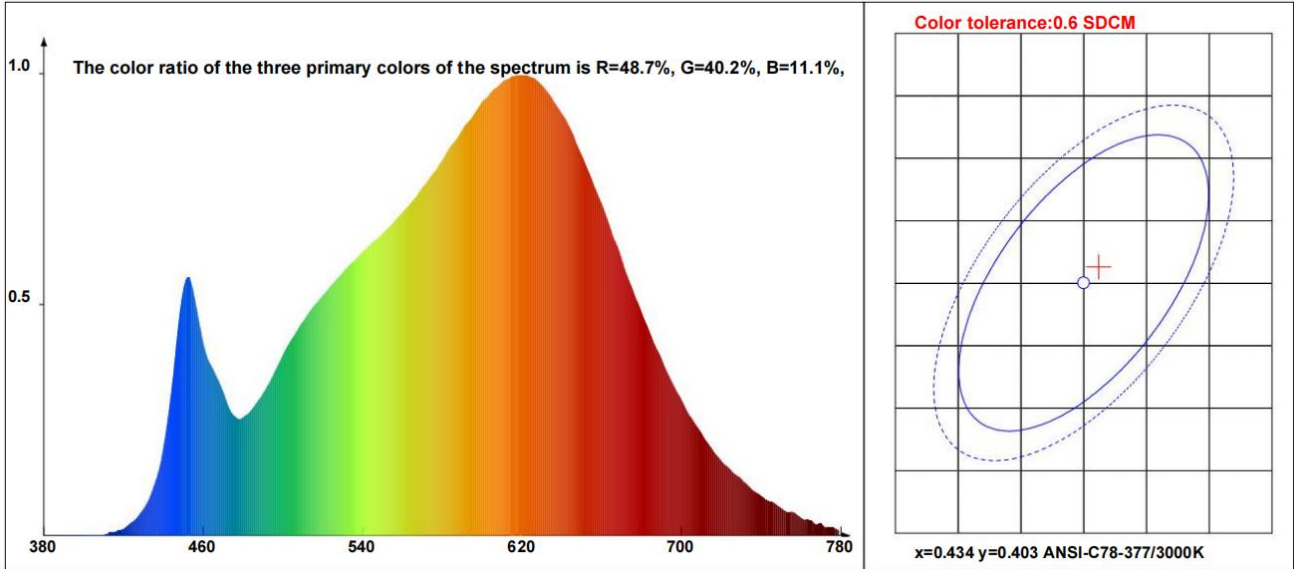
Size in mm
1" = 25.4mm.

ACCESSORIES DIAGRAM



Size in mm
1" = 25.4mm.

PHOTOMETRICS



Colorimetric parameters

Chromaticity coordinates: $x=0.4350$ $y=0.4043$ $u=0.2492$ $v=0.3475$ $duv=0.0004$

Correlated color temperature: 3035K Dominant wavelength : 582.5nm Color purity :

52.0% Luminous flux Color ratio: R=23.8%, G=74.4%, B=1.9% Peak wavelength: 619.8nm and a half Width :161.6nm

Color rendering index: Ra= 89.3

R1 =88	R2 =93	R3 =96	R4 =95	R5 =93	R6 =90	R7 =85	R8 =75
R9 =53	R10=86	R11=95	R12=76	R13=88	R14=97	R15=83	

Dual-Purpose Step and Deck Lights

Slim and safe, dual-purpose low-voltage lighting for steps and decks.



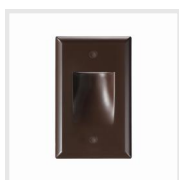
Tende Orizzontali Step & Deck Light



Retro Baffle Step & Deck Light

277V Compatible Commercial Step Lighting

Seamlessly integrates with commercial voltages.



ZincTech Commercial Upright Gradience Step & Deck Light



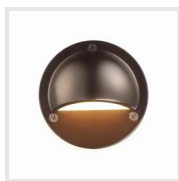
ZincTech Commercial Parallel Gradience Step & Deck Light



ZincTech Commercial Louvered Step & Deck Light

Classic Glow Series

Retro design meets modern lighting.



Semisfera Deck & Rail Light



Quadrifoglio Deck & Rail Light



Pro Parallel Retro Louvered Step & Deck Light

Modern Elegance Series

Blending utility with modern aesthetics.



Affusolato Deck & Rail Light



Nova Deck & Rail Light



Vertebre Deck & Rail Light

All Color Options

some models may have limited choices.



Satin Nickel



Matte Black



Oiled Rubbed Bronze

Compatible Accessories



Outdoor Transformer, AC to DC, 12V 60W, Timer & Photocell



Outdoor Transformer, AC to DC, 12V 100W, Timer & Photocell



Outdoor Transformer, AC to DC, 12V 120W, Timer & Photocell



Waterproof Wire Nuts - Large (For terminals/multiple connections, fits 12AWG - 22AWG, up to 8 wires of 16/2)



Waterproof Wire Nuts - Medium (Fits 14AWG - 22AWG, up to 3 wires of 16/2)



Low Voltage Landscape Lighting Cable, 16/2

Note: Also available in 10/2, 12/2, 14/2 sizes.



Landscape Light Wire Connector (14-16 AWG Compatible)



EasyConnect Wire Connector (14-16 AWG Compatible)